

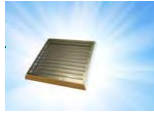
DON'T FORGET TO SELECT
SELECT QUANTITY DESIRED
CLICK IMAGE FOR MORE INFO.
OR EMAIL
sales@qclabequipment.com



[ACCOUNT SET UP ADDRESS FOR FREIGHT QUOTES](#)

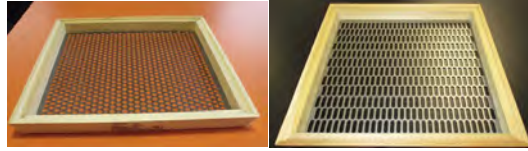
PUBLISHED MANUFACTURERS LIST PRICES
EX WORKS. AVAILABLE DISCOUNTS ARE CALCULATED
UPON FINAL EQUIPMENT SELECTION, AND
GEOGRAPHICAL LOCATION

COFFEE BEAN GRADING SIEVES & ACCESSORIES



Now available in
Stainless Steel!
Optional Cabinet

Coffee Laboratory HAND SCREENS
are quality constructed, using
premium kiln dried wood. The finished
wooden frames are designed to stack
on top of each other.



Round or oblong (Peaberry) hole apertures
are custom punched with .004" tolerances, in
to premium 20 gauge sheet metal plate, using
computer numerical control (CNC) machine
tools, eliminating partial holes.



**500 TRAYS WITH
LOGO** The Coffee
Tray is the link to
effective quality
control and the
perfect advertising
gift for your coffee
company.

WOOD FRAME FULL SET 10/64th" - 20/64th" MILD STEEL ROUND HOLE \$ 925

WOOD FULL SET 10/64th" - 20/64th" STAINLESS STEEL ROUND HOLE \$ 1,795



STAINLESS STEEL FRAME SIEVES
ISO 4150 International Standard
specifies a routine method for
carrying out size analysis of green
coffee, by manual and machine
sieving using laboratory test
sieves.



"A well-designed
machine should have a
time performance
equal to the manual
method.

Includes digital
power, timing and
intermittence
controls for sieving.

FTL 0200
Digital electromatic sieve shaker for
sieves from Ø 60 a 203 mm. Three-
dimensional movement throughout
the sieve column makes it very
effective when carrying out
granulometric tests.



Interface separated from
the balance

PS 2100R2MH

**RUGGED CONDITIONS BALANCE MAX CAPACITY
2100 grams MAX REPEATABILITY 0.008 g
INTERNAL CALIBRATION FEATURE
LARGE WEIGHING PAN 195 × 195 mm**

STAINLESS STEEL FRAME FULL SET 10/64th" - 20/64th" STAINLESS STEEL ROUND HOLE \$1,295

STAINLESS STEEL FRAME FULL SET ISO 4150 STAINLESS STEEL SIEVES FOR MANUAL OR MACHINE SIEVING
Includes 20, 19, 18, 17, 16,15, 14, 12 1/2, 12, 10, 7 ROUND HOLE DESIGNATIONS ISO 4150 ANNEX A

Includes 14, 13, 12, 11, 10, 9, 8 SLOTTED HOLE DESIGNATIONS (PEABERRY) ISO 4150 ANNEX B \$2,495

FTL 0200 DIGITAL SIEVE SHAKER WITH 3D MOTION, AND PROGRAMMABLE FEATURES \$2,495

PS 2100R2MH RUGGED CONDITIONS BALANCE \$1130

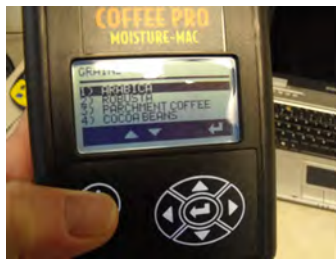
COFFEE TRAYS QUANTITY 500 CUSTOM LOGO \$1,475 ONE COLOR

[CLICK FOR QUOTE REQUEST](#)

COFFEE MOISTURE ANALYZERS



COFFEE PRO MOISTURE MAC
 Easy to use.
 Rugged portable design.No
 sample preparation required.
 Averaging facility
 GREEN COFFEE,
 PARCHMENT, COCOA



**LANGUAGE OPTIONS
 IN ENGLISH,SPANISH,
 PORTUGESE, GERMAN,
 AND FRENCH**



**Comes with soft carry
 case, and computer
 connection cable**



SINAR BEANPRO

**INTERNAL BALANCE
 AUTOMATIC MOISTURE AND DENSITY MEASUREMENT
 RECOGNIZED WORLDWIDE**

**NEW! Software upgrade for measuring density
 according to ISO 6669**



**MLOG- Capable of storing
 up to 1000 readings**

**Easy Transfer of Data via
 Email or WhatsApp**

**Compatible with 10S and
 Android operating system**



**Optional hard
 case and field
 density scale**

641 MA210X2ICA



**Thermogravimetric moisture analyzer
 Designed to match oven standards,
 but in minutes, instead of hours.
 Direct method can be used on all
 coffee sample types. Sample must be
 ground. Measures true TDS**

MOISTURE MAC \$389

MOISTURE MAC KIT (W SCALE & HARD CASE \$479

SINAR BEANPRO \$3,095

THERMO GRAVIMETRIC ANALYZER \$2,519

MRDA8 MOISTURE PROBE FOR BURLAP SACKS \$3,495



**FOR NON DESTRUCTIVE MEASUREMENT
 OF MOISTURE IN BULK MATERIALS , OR
 BURLAP COFFEE SACKS.**

**All stages and types of coffee including
 roasted whole bean and ground coffee**

**Operating on the patented radio frequency
 power loss absorption principle, the DA8
 projects an RF Field in to the test area.**



[CLICK FOR QUOTE REQUEST](#)

SAMPLE PREPARATION



DELUXE SAMPLE DIVIDER BOERNER TYPE

The BOERNER TYPE Gravity Divider is made to meet F.C.I. and B.I.S. Requirements.

Material flowing components are made by a special process to give the unit a smooth finish made without welding or joints. It is used to reduce the size of a grain/seed sample into two halves, each exactly representative of the original sample.



PARCHMENT HULLER

The Parchment Coffee Sheller is a great aid in the inspection of samples in the coffee processing laboratory. In less than 5 minutes, a sample of 250g of parchment coffee will be converted into oro (gold) coffee in order to determine quality and rendition.

All contact parts in the sheller chamber are anti-corrosive material. Time (0-180 seconds), speed (0-1725 RPM) and shelling pressure are adjustable according to your needs.



LSG33 Grinder

The LSG33 is a commercial Grinder to be used by professional users. The LSG 33 Coffee Lab Grinder grinds whole bean coffee into a container (not provided) with a variable stepless grind setting dial, from super fine to coarse coffee powder.

BOERNER SAMPLE DIVIDER \$1,395

PARCHMENT HULLER \$2,695

LSG 33 GRINDER \$1,995

COMPAK PK100 GRINDER \$4,650

MAHLKONIG EK43 \$4,900

MAHLKONIG EKK43 \$5,750



COMPAK[®]
COFFEE GRINDING COMPANY

COMPAK PK100

GERMAN QUALITY
Constructed of cast aluminum
Micrometric regulation
Turkish to French Press grind range
Double ventilation system
Bag shaker extension
Aluminum front regulator



MAHLKONIG EK43 / EKK43

Powerful Combination:

Exceptionally robust grinder with high grinding capacity Suitable for grinding different sample types, and different degrees of fineness, such as EG Filter, Espresso, and turkish-fine.

EKK 43:

Two independent grinders for different applications
Saves space, time and costs

[**CLICK FOR QUOTE REQUEST**](#)

SAMPLE ROASTING



SINGLE DRUM SAMPLE ROASTER \$3,295-\$3,595

- Temperature-
Heat source switches on and off via solenoid valve; +/- 2°C
- Gas or electrical heating options
- Equipped standard with an additional thermocouple for data logging
(A chaff cyclone is optional because it has a built-in fan, generating airflow that transports chaff out through the exhaust pipe)
- For premises where the exhausts can't be transported out to the exterior, and for the purpose of 100% cleanliness, an optional cyclone is recommended.
- Front-access cooling tray and green bean feeder included
- Includes timer to precisely manage your roast

- Each machine includes a maintenance tool-kit



TWO DRUM SAMPLE ROASTER \$4,995- \$5,995

Our coffee sample roasters allow for complete roasting flexibility for small capacities of 80-100g. Traditionally, these mini roasting machines are the preferred choice of coffee exporters, importers, traders and roasters as a means to perform quality inspection of samples intended for purchase.



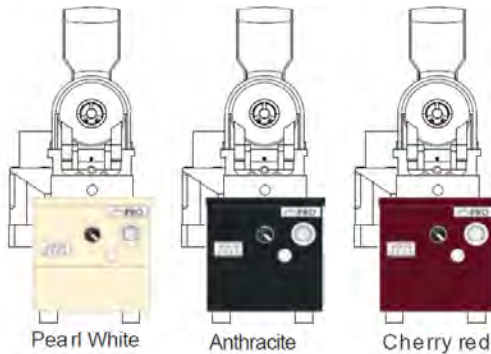
Built to resemble the larger industrial drum roasting machines, it also makes the ideal roaster to learn the art of roasting. The solid drum provides the user with an even coffee bean development and uniform roast. Both, control over gas supply and airflow, enables the user to obtain the desired roasting time lying between 8-15 minutes.

Separate chaff collecting cyclone and cooling fan (for 2, 4 and 6 drum models)

FOUR DRUM SAMPLE ROASTER \$8,995 - \$9,995



DRUMS HEAT VOLTAGE COLOR



Different sized cog wheels for 50 or 60 HZ to assure repeatable roasting

[REGISTER ADDRESS HERE FOR FREIGHT QUOTES](#)

[CLICK FOR QUOTE REQUEST](#)

WATER ACTIVITY & ROAST DEGREE

rotronic
LEADING IN HUMIDITY MEASUREMENT



ROTRONIC HC2AW WATER ACTIVITY METER

The aw measurement head was developed for use alone, or in combination with the HygroLab or the HP23-A-AW hand held analyser. This digital probe enables quick and easy measurement of water activity. It can be calibrated via the HW4 PC software **CONNECTS TO A PC. INCLUDES SOFTWARE EXPANDABLE SYSTEM**



LIGHTTELLS CM100 PLUS ROAST DEGREE ANALYZER

The CM-100 + Roast degree analyzer supports quick measurements, with high accuracy measurement results, and long battery working hours (up to 6 hours of continuous use) It is easy to use, and portable.

SCAA STANDARDIZED



LIGHTTELLS AW600 WATER ACTIVITY METER

The AW600 is a robustly designed Water Activity Analyzer, designed to accurately measure the vapor pressure of free water escaping from samples to the air, in a test chamber.

Uses plain salt to calibrate, eliminating the need for calibration standards.



COLORTRACK REFLECTOMETER FOR ROAST DEGREE

ColorTrack is part of a new wave of laser technology breakthroughs, made possible by pc based data acquisition hardware and software. The ColorTrack Laser Module transmits and receives some 10,000 individual readings in a one second scan. Since the recommended scan time is 20 seconds, that leaves about 200,000 readings to be analyzed per test.

SCAA BEST NEW PRODUCT AWARDED!



COLORTRACK REAL TIME ROAST DEGREE

The ColorTrack Real Time Application was made to monitor and record real time data which is generated during a coffee roast, from various sensors. (ColorTrack Laser Module, drum and exhaust thermocouples, Humidity Sensors, etc...)

This information is displayed in both graph and table views. The roast data can be easily accessed through the track panel.

CLICK FOR QUOTE REQUEST



LIGHTTELLS CM200

The CM-200 portable Coffee Roast Degree/Uniformity/Grind-Size Analyzer is designed to measure the roast degree, roast uniformity for both whole and ground bean, and can also analyze the distribution of grind size.

AW600 WATER ACTIVITY METER \$2,500

HC2AW WATER ACTIVITY METER \$4,360

CM100+ ROAST DEGREE ANALYZER \$2000

COLORTRACK BENCHTOP REFLECTOMETER FOR ROAST DEGREE \$6,995

COLORTRACK REAL TIME ROAST ANALYZER \$1,995

CM200 COMBO ROAST DEGREE GRIND SIZE ANALYZER \$2,500

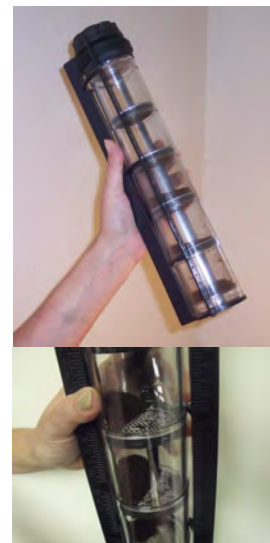


CERTIFIED COFFEE GRIND ANALYSIS SIEVE SET

High grade stainless steel laboratory test sieves. Includes most popular sizes for coffee grind analysis ASTM 12, 16 20 30 40 50 LID & PAN

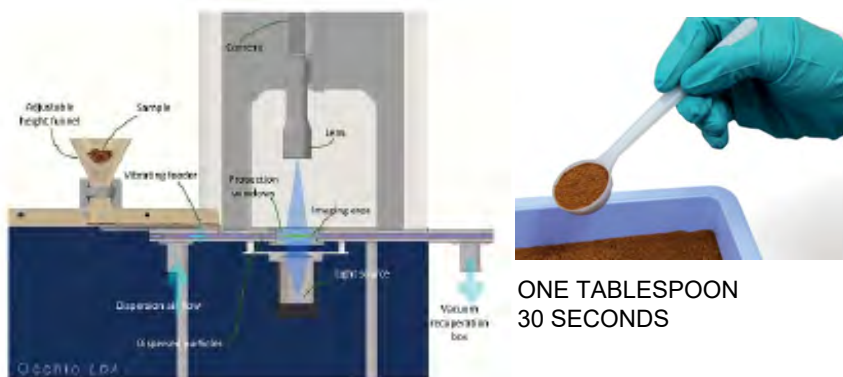


FTL 0200

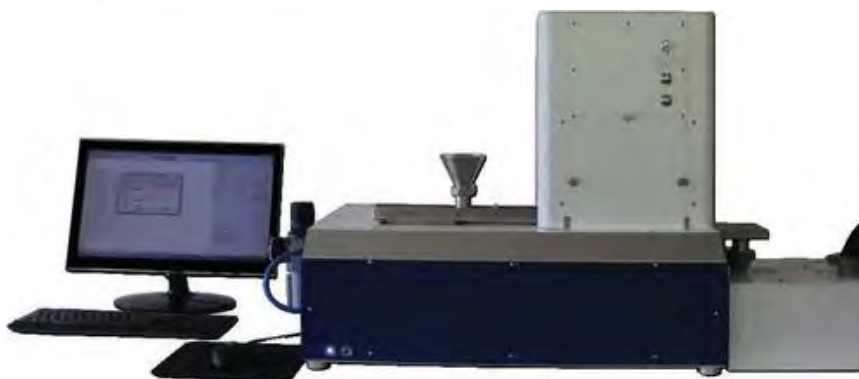


HAND SIEVE SHAKER FOR COFFEE GRINDS

The Coffee Grind Sizer is a manual sieve kit designed to provide a quick visual analysis of coffee grind size distribution. It features twenty stainless steel screens including the standard coffee grind sizes, ranging in size from US sieve No. 12 to 50, plus an additional 14 sieves. The sample is placed into the top of the five clear acrylic cylinders, then shaken to distribute the coffee particles

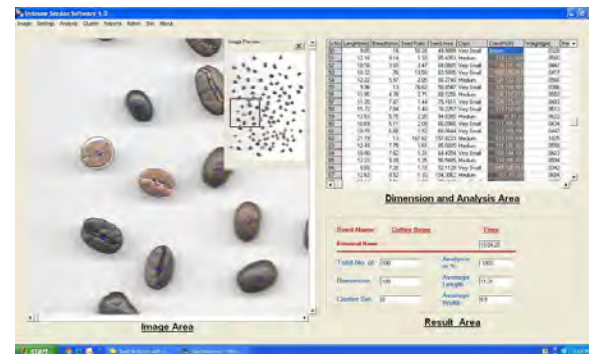


ONE TABLESPOON
30 SECONDS



OCCHIO COFFEE TRAK PARTICLE SIZE & SHAPE ANALYZER

Measures particle size, and shape. Full analysis in seconds, with complete reports



Connects to a standard scanner. Measures particle size, and color in RGB Values

COFFEE PARTICLE SIZING & COLOR SOFTWARE

- QTY COFFEE GRIND SIEVE SET \$749
- HAND SIEVE SHAKER SET \$195
- OCCHIO HIGH SPEED PARTICLE ANALYZER \$49,995
- COFFEE ANALYSIS SOFTWARE \$1,500

CLICK FOR QUOTE REQUEST



LIGHTTELLS CA-700 Caffeine Analyzer

The CA-700 can analyze the Caffeine and Chlorogenic acid of coffee, and it can show you the recommended daily amount of coffee you should have.

SCAA BEST NEW PRODUCT AWARDED!



ATAGO POCKET BARISTA REFRACTOMETER FOR TDS

- 2003 "Good Design Award"
- 2004 "Venture Technology Awards (Excellence)"
- 2005 "Technology for Food Industry Award"



SCAA BEST NEW PRODUCT AWARDED!

INSENT TASTE ANALYZER

Taste Sensing system and its applications

-Method: Taste sensor using a lipid membrane to mimic the human tongue.



LIGHTTELLS CAFFEINE ANALYZER \$2,700

ATAGO POCKET BARISTA \$449

INSENT TASTE ANALYZER \$130,000

CLICK FOR QUOTE REQUEST



NEXU CUPPING TABLE

Two-tiered lacquered wood top fixed on a 50 cm rotator plate for durability and smooth spinning.
DIAMETER 1000 mm
HEIGHT 1100 mm
NET WEIGHT: Approximately 90kg / 198 lbs



TAPPED DENSITY ANALYZER FOR POWDERS

The Tap Density Tester is used to measure the tap density of powders. It consists of touch panel, printer, electronic balance, tap assembly, motor and glass cylinders. It is designed to meet all currently known international standards.



CUPPING BOWLS & SPOONS

Bottom Diameter 2 Inches
Capacity 7 oz.
Color Bright White
Dishwasher Safe Yes
Edge Style Rolled Edge
Features Lead Free
Material Porcelain
Microwavable Yes
Oven Safe Yes
Shape Round
Type Tasting Cups

Qty

NEXU TASTERS SPITTOON

NEXU CUPPING TABLE

TAPPED DENSITY ANALYZER

SET OF 12 SPOONS & CUPS

[CLICK FOR QUOTE REQUEST](#)